



## Jasmine House, Perth Road IG2 6FE

Edward Chase presents to the residential lettings market this spacious 1 bedroom apartment located on the doorstep of Gants Hill Station (Central Line). Located only 0.1m from Gants Hill Station (Central Line) this apartment benefits from Gas central heating, Balcony, Parking and much more. This apartment is simply one the best in the area and would be perfect for a professional couple searching for a long term let. This apartment has several key features such as: Doorstep of Gants Hill Station (Central Line) Gas central heating White goods include dishwasher Open plan large kitchen with ample storage Private underground parking available 24/7 security & concierge service Double glazed windows Tiled master bathroom Enormous master bedroom Elevator system Super location with tones of local amenities Gearies Primary catchment Ofsted: Outstanding Secure entry phone system If you would like to view this property or require further details, please call

- Amazing, Luxurious, Spacious First Floor Apartment Located in Gants Hill (Central Line)
- 24/7 On Site Security & Concierge with Private Allocated Parking and Visitor Parking
- Spacious Bedroom, Private Reception Room, Open Plan Kitchen
- Development is Part of The Popular Gabrielle House And Jasmine House Site
- Double Glazed Windows, Balcony Doors Opening into Balcony & Huge Communal Area
- White Goods Including Dishwasher, Washing Machine, Fridge/Freezer Integrated

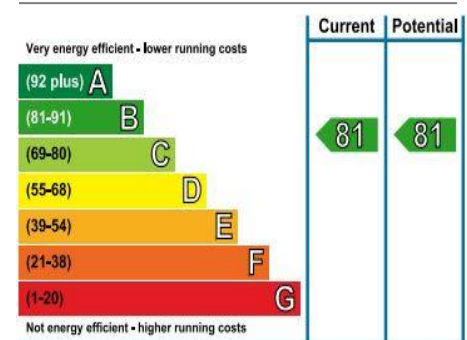
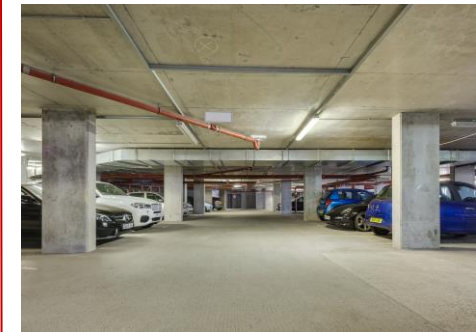
**Monthly Rental Of £1,299**

# Jasmine House Perth Road IG2 6FE

**Monthly Rental Of £1,299**

Edward Chase presents to the residential lettings market this spacious 1 bedroom apartment located on the doorstep of Gants Hill Station (Central Line). Located only 0.1m from Gants Hill Station (Central Line) this apartment benefits from Gas central heating, Balcony, Parking and much more. This apartment is simply one the best in the area and would be perfect for a professional couple searching for a long term let. This apartment has several key features such as: Doorstep of Gants Hill Station (Central Line) Gas central heating White goods include dishwasher Open plan large kitchen with ample storage Private underground parking available 24/7 security & concierge service Double glazed windows Tiled master bathroom Enormous master bedroom Elevator system Super location with tones of local amenities Gearies Primary catchment Ofsted: Outstanding Secure entry phone system If you would like to view this property or require further details, please call Edward Chase today.

Lettings Edward Chase estate agents offer a bespoke, professional, ARLA accredited Lettings & Management service. If you would like a free appraisal to gauge the rental potential of your property or you are considering a buy to let purchase, please feel free to contact Sukhbir Basra, Branch Manager to arrange an appointment. A tenant referencing fee of £195 per person will be charged subject to a minimum fee of £500 per property. All fees are inclusive of VAT.



## MONEY LAUNDERING REGULATIONS 2003

Intending purchasers will be asked to produce identification and proof of financial status when an offer is received. We would ask for your co-operation in order that there will be no delay in agreeing the sale.